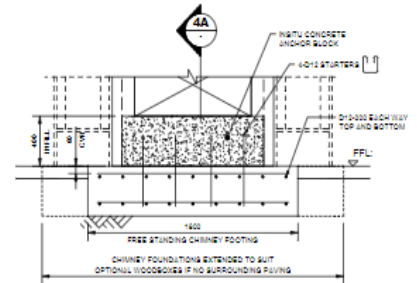
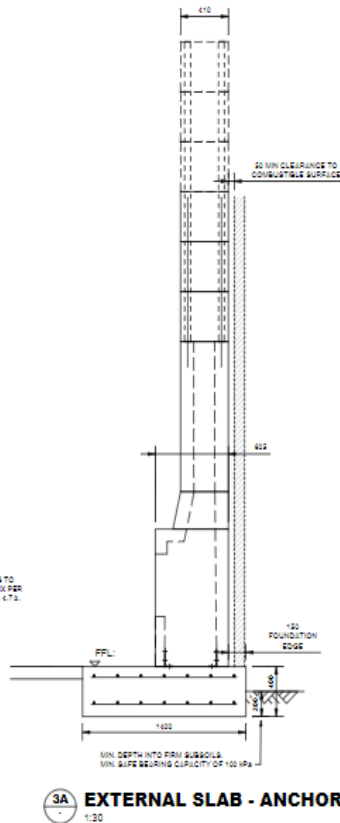
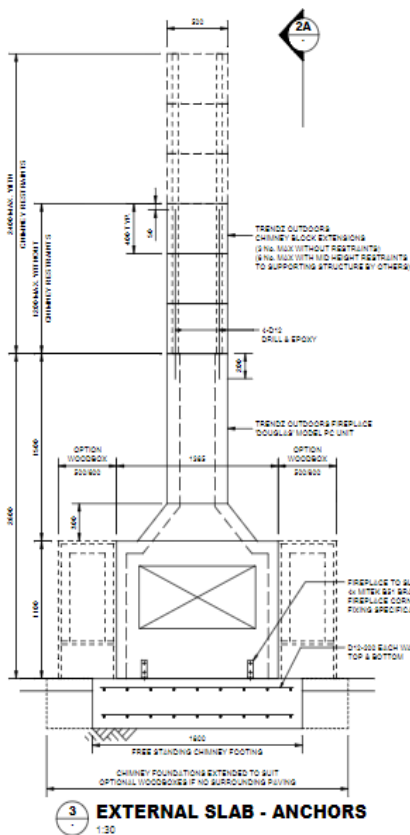


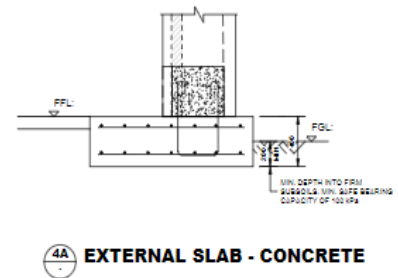


## FOUNDATION REQUIREMENTS

Please contact Trendz to acquire a set of relevant engineers' drawings for the concrete foundations required for your Trendz Fireplace. Trendz will be able to advise which drawings apply to your specific situation.



**4 HOUSE FOUNDATION - CONCRETE**  
1:30



**4A EXTERNAL SLAB - CONCRETE**  
1:30

## CONSENT REQUIREMENTS

Trendz recommends obtaining a building consent, where required, for solid fuel-burning appliances in accordance with the local regulations and/or councils. The application should consider the requirements of the Building Code, AS/NZS 2918 Domestic solid fuel burning appliances, Trendz Outdoors manufacturer's installation instructions and the National Environmental Standards for Air Quality.

If being installed with the flue penetrating the roof of a building, an Application for building consent for a residential wood burner needs to be completed. It must then comply with AS/NZS 2918:2018 Standard.

## WARRANTY

The design of the outdoor fireplace has been done in accordance with AS/NZS2918:2018. The user should satisfy themselves that the installation is fit for purpose and complies with all local and national codes.

All Trendz outdoor fireplaces come with a 2 year manufacturers guarantee.

- In the event that any part of your TRENDZ OUTDOOR FIRE is found within 2 years of the invoice date to have undergone structural failure due to faulty workmanship or materials. This will not include slight cracks (5mm or less) within the concrete which may occur due to the heat output of the fireplace.
- And that defect is not due to I. Negligence, abuse, accidents, lack of maintenance or improper installation; II. Products tampered with or modified
- Fair wear and tear Trendz Outdoor Fires will
- Repair or replace the part found in Trendz Outdoor Fire's judgement to have been defective in workmanship and materials. Note: Small surface cracks will often appear after the fire has been put into service.

## CAUTION

- This appliance is not intended for use by persons (including children) with reduced physical, sensory, or mental capabilities, or lack of experience and knowledge unless they have been given supervision or instruction concerning use of the appliance by a person responsible for their safety.
- Do not leave children unattended near the alighted fire and keep them well away from the burner when in use. Supervise young children to ensure that they do not play with the appliance.
- Do not use flammable liquids or aerosols to start or rekindle the fire. Also, do not use such flammable materials near this appliance when it is operating.
- Only use burning appropriate fuels in accordance with the National Environmental Standards for Air Quality and Local Council standards. Dry firewood, sourced from a reputable wood merchant, is the most appropriate fuel for use in wood burners. Dry wood has a lower moisture content than wet wood and when burned it produces less smoke and less particulate matter pollution. The size and quality of your wood also has an effect on the efficiency of your wood burner.
- Always keep clothing, firewood, furnishing, and other combustible materials at a safe distance from the fire.
- Do not touch any part of the fire other than the surrounding concrete casing as all of the other components can be extremely hot.
- Do not attempt to clean or maintain the fire when in use or with hot embers in the firebox. Ensure that embers and all other parts of the burner have cooled down completely before starting ash removal or other maintenance.
- Do not use the fire if there is a malfunction, a suspicion of breakage, or unusual noise. Contact Trendz Outdoors.